


www.helpubuild-ca.com



**FOR
SALE!**



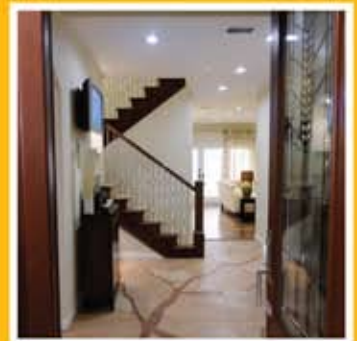
 **The Capistrano** • 3,432 Sq. Ft. • 4 Bedroom/3.5 Baths

Show Village 09
Special Offer!

Opportunity of a Lifetime!

Own an IBS 2009 Show Home! The Capistrano.

Priced to move! Our beautiful 2-story, 3,432 sq. ft. home built to be the "Green" Masco Show Home for Professional Builder's Show Village 2009 is available to ship to your lot immediately at an **amazing discount!**



APPRAISED AT OVER **\$650,000** & FEATURES THESE BEAUTIFUL ROOMS




The "Capistrano"

Brand : Discovery Custom
 Model Name : Capistrano (2 story)
 Approx. Sq Ft : 3432*
 Dimensions : 44' X 68'
 Bedrms & Baths : Four / Three plus 2* bonus rooms

Builder Base Price **\$211,000.00**

Capistrano built as a Discovery Custom Home would contain these options

 James Hardie Cemplank Lap Siding \$9,995.00 Standing seam roof accents \$1,985.00 Rock accents \$1,795.00 Lehigh Front Door w sidelights \$3,090.00 Fire door rear \$475.00 2 French doors \$4,000.00 Wood Cabinet Doors & Stiles \$4,600.00 Wood Molding & trim package (incl sills) \$475.00 Glass cabinet inserts \$1,895.00 Prime trim fascia \$2,400.00 Tile deck and wall combo \$2,895.00 Tile shower w 2 décor ribbons \$1,895.00 84" shower with seat \$1,680.00 Castleby Lighting Package \$2,390.00 Tranquil Moments Carpet \$4,795.00 Solid Surface countertops \$8,995.00 Puebla Backsplash Kitchen \$1,155.00 Full Glass Backsplash Kitchen \$1,795.00 2" faux wood Blinds \$1,510.00 Drape Treatment throughout \$2,895.00 upgrade puebla tile \$1,800.00 Butlers pantry \$895.00 GE Gourmet II Appliance Package \$5,095.00	Pendant lights \$2,400.00 Overhead cabinets Utility \$1,295.00 Computer Center \$1,270.00 Alternate kitchen island \$1,200.00 Under/Over cabinet lighting \$740.00 Ceramic tile dining and baths \$3,180.00 Wine rack \$795.00 Base & Overhead Cabinets in utility \$795.00 Sconce lighting accents \$1,600.00 MBR classy closet \$2,500.00 W/B/S for ceiling fans \$1,200.00 45Lb snow load \$6,930.00 Canyon Rock lighting package \$2,120.00 Oil rubbed Bronze Package \$2,800.00 Alternate bath package \$2,395.00 Sprinkler System \$18,995.00 Dues and drywall finish \$7,322.00 California Mod requirements \$2,500.00 Material Surcharge \$3,122.00 Washer & dryers \$2,645.00 Home office center \$3,895.00 Dues and drywall finish \$7,322.00 Integrated Garage \$14,995.00 CA Mod requirements \$2,500.00
Displayed Upgrades \$163,021.00	
Capistrano as a Discovery Custom Home \$374,021.00	

IBS Model Home as Displayed Contains these Estimated Additional Upgrades

Stone accent for exterior \$1,467.00 Plastpro front door \$2,450.00 rear door \$1,895.00 Mira clad windows \$38,790.00 Timber tech deck and railing \$6,300.00 Orpec Interior doors & hardware \$2,028.00 Merilat Cabinets Throughout \$94,199.00 Lumicor door inserts and cabinet accents \$9,987.00 GE profile Series appliances \$30,315.00	<u>Plumbing fixtures</u> sinks, faucets, toilets \$12,461.00 specialty tubs and showers \$6,281.00 <u>Ceramic tile</u> including flooring, walls, decks and showers \$40,250.00 Armstrong hardwood flooring \$6,604.00 Light fixtures add'l value master closet system add'l value HVAC system \$18,995.00
--	--



Show Village
 Displayed Upgrades* **\$272,022.00**

* displayed upgrades are based on the actual figures from the various suppliers of the Deschutes home. Some of the supplied features have not been introduced or priced at the time of the IBS show, therefore the value of the supplied upgrades is much greater than indicated.

Investment does not include: Land (prices vary substantially depending on location), site improvements which would include driveways, driveways, sidewalks, garage, landscaping, electric, final grading, septic/ sewer, water/ well, building permits, etc.

2009 Show Village Capistrano as shown with all upgrades and additional features **\$646,043.00**

FOB Casa Grande AZ